



Vectorworks.Landmark

YOUR
VISIONS.
PERFECTLY
REALIZED.

VECTORWORKS LANDMARK

Every day, designers choose Vectorworks because of our multidisciplinary approach and because they want a solution that supports their creative process instead of replacing it. We allow great design to materialize from inspiration, exploration, and discovery. Our DNA originates in the creative part of the design process, and so we place a heavy emphasis on freedom of artistic expression through the development and documentation of each project.

Vectorworks Landmark software offers landscape-specific tools and superior 2D and 3D design capabilities to help you create a better built environment.



On the cover: The Office of James Burnett

With offices in Houston, TX and Solana Beach, CA, The Office of James Burnett creates landscapes that relate to the rhythm of the surrounding architecture while weaving in unforgettable sensory experiences with a creative and unique plant palette. One such example is The Park at Lakeshore East in downtown Chicago. This six-acre park contains hundreds of trees and more than 100 varieties of perennials, grasses, and flowers, offering recreational opportunities and a place to hold farmers' markets and festivals on weekends.

Image courtesy of James Steinkamp, Steinkamp Photography, and the Office of James Burnett

To read more about this and other projects, visit: www.vectorworks.net/success-stories

CAPTURE YOUR VISION

With Vectorworks Landmark, you have the freedom to design in your own way, use the tools you want, and capture your ideas all in one place to reduce wasteful repetition and inefficient work. Plus, you can maintain your existing workflows, incorporating your design process and making the best use of the skills you already have in house. Collaborate with coworkers and colleagues who use other software applications, and seamlessly input critical, pre-design information into Vectorworks to capture all the elements of your vision.

Powerful Conceptualization

Find your inspiration and start drawing. Or, import hand sketches, site pictures, and even documents or models from other applications. Invoke ideas in 2D, and explore them in 3D with free-form models.

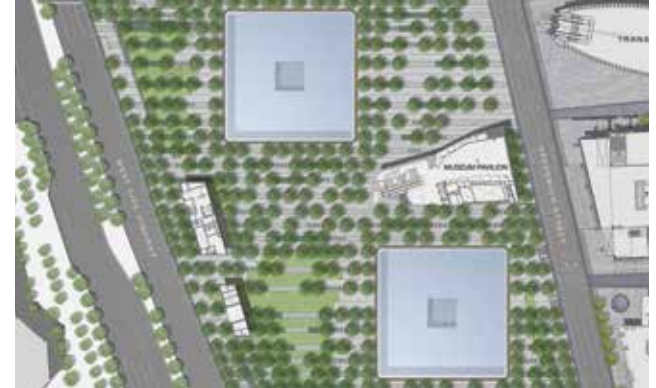


Courtesy of CYP Studios/MorrisTerra

Free-Form Modeling

With our intuitive interface, you can design from any 2D or 3D view using modes in drawing and modeling tools that automatically sense working planes as you move your cursor, and enjoy the superior quality that allows you to manipulate your models with ease. More accurate object information and better snapping make drawing easy. The SmartCursor™ helps by showing hints, like the angle from the previous segment, as you draw, and our patent-pending X-ray Select technology lets you see through models to select, move, and modify hidden objects with precision and ease. Plus, an advanced suite of solids and NURBS surface tools lets you create any shape and easily explore organic geometry. Push, pull, blend, twist, sculpt, deform, **bulge**, **taper**, or punch holes. Anything's possible with Vectorworks Landmark.

"We always use Vectorworks on preliminaries. That's typically the way we work—everyone here has to do that. It's much more refined than AutoCAD." – Peter Walker, PWP Landscape Architecture



Courtesy of Landscape Architect Peter Walker

Design Anything

Bring your ideas to life. Many CAD applications restrict your ability to design beyond a core discipline. Vectorworks Landmark goes beyond planting plans. You can design anything — graphics, ornamentation, hardware, hardscapes, plant symbols, furniture, decking, master plans, or whatever you can imagine — without having to learn or use additional applications.

Endless Digital Images

Make your work even more compelling and easier to communicate with digital imagery. Import scans, digital photos, or web images. Import or export a wide array of image files, including Illustrator® EPS and native Photoshop® PSD files. Also, export your design for inclusion in your firm's marketing materials or website.



DEVELOP WITH YOUR WORKFLOW

Delivering accurate information efficiently while remaining true to a designer's vision is the pivotal point of any artistic enterprise. As with all design tools, the fundamental purpose of software is to support and strengthen inspiration.

With Vectorworks Landmark, you can move easily between tasks from design concepts to construction documentation and every phase in between. Create, model, present, and develop your designs easily and precisely with one application.

The program boasts a comprehensive set of design development tools to support your entire practice. You have complete functionality for:

Range of Projects

Work on any type of project within a flexible design environment. Design residential plans at a 1:10 scale up to master plans at 1:1,000 or larger. The design tools easily scale up or down to accommodate your work.

Efficient Workgroup Capabilities

Break up complex projects. Whether you're a sole practitioner collaborating with other professionals or a large firm dividing work among different members of the team, Vectorworks Landmark's workgroup referencing provides a flexible way to split even the most complicated project into manageable pieces.



Courtesy of Luciole Design, Inc.



Courtesy of James Steinkamp, Steinkamp Photography, and the Office of James Burnett



Site Information Modeling (SIM)

With Vectorworks Landmark, you can create site information models without changing your preferred design process. Whether you're looking to streamline costs; analyze your design for area, volume, slope, cut/fill, and other data such as water flow and sun/shade; or just create world-class designs, Vectorworks Landmark provides an efficient way to introduce SIM capabilities into your workflow. Enjoy the robust and flexible capabilities of SIM with the ease of design, great documentation, and intelligent tools that the software is known for — right from the start.

Scan in planting plans and trace over them with ease. Or, simply enter your field measurements. Use the property line tool to define a site's boundaries and setbacks. Plus, building tools and site objects easily document existing structures and site conditions. In addition, you can use the program's drawing, modeling, and 2D and 3D graphics capabilities for compelling presentations.

Mapping and GIS

Integrate maps into your work with ease. Add survey data to your drawing and use it as the basis of your site model, or import CAD drawings and data from architects, builders, or engineers to use as base plans. Import geo-referenced aerial/satellite images and GIS data files from federal, city, state, or other agencies.



Image courtesy of Joost Godts Consultancy

Interoperability

Get on the cutting edge of collaborative digital practices, and exchange drawings and models fluidly with Vectorworks software's IFC 2x3 or DWF translators. Exchange 3D NURBS models with Rhinoceros® 3D. Import concept models from SketchUp®, and access thousands of models from Trimble® 3D Warehouse. Import, export, or directly reference AutoCAD® 2015 DXF/DWG (and earlier) files. Publish drawing sets as multi-page PDFs, DWFs, and DXF/DWGs, or import PDFs for reference. Export 3D models to Google Earth®.

"We collaborate with various design disciplines, so it's beneficial to be able to import partners' PDF or DWG files and work with them in Vectorworks Landmark." – Design Associate Michelle Lin, Town & Gardens, Ltd.

Extensive Automated Reporting and Database Support

Stop manually counting plants, planting areas, hardscape areas, or other multiple site features in your drawings and models. Automatic data tracking does the tedious work for you; built-in database worksheets continually keep track as your designs evolve. Take advantage of the two-way link between database worksheets and objects, giving you the power to change object parameters directly from the worksheet. The application goes further than automated schedules and quantity take-offs. It provides a user-defined, quick, and accurate way to assign custom data to any object and create unique reports for LEED and SITES™ projects that require water budgets and stormwater runoff calculations.

In addition, the Notes Manager database lets you store, manage, and recall document notation while the Issue Manager keeps track of what, when, and to whom drawings and files were issued. Plus, it automatically dates your title blocks.

When it is important to connect to data sources outside the Vectorworks platform, our ODBC module gives you the power to link to databases and connect objects in Vectorworks Landmark to the external records and fields for bidirectional reporting and control.

Industry Content Out of the Box

Take advantage of our large landscape libraries, which include furniture, outdoor equipment, lighting, and irrigation objects. There's no need to re-draw objects when you can use pre-drawn plants, plant images, and thousands of symbols, tile patterns, and hatches from manufacturers like Unilock®.

Flex your green thumb, too. We've partnered with Xfrog®, the industry's premier developer of botanical models, to provide you with one of the largest plant image libraries available in any CAD application. You'll find photorealistic plant images in several views, including top, elevation, and 3D, as well as seasonal and growth views. Plus, you can access a library of stylized plants for more impressionistic presentations.

Superior 2D Documentation

Produce high-quality documentation with ease. Use our suite of precision drawing tools and intelligent landscaping, irrigation, site design, and road objects to lay out plans, elevations, sections, and detail drawings.

The exclusive Place Plant tool creates plantings by placing symbols, individually or spaced equally, in groups. Our unique Freehand tool lets you draw organic shapes for beds and water features. Our convenient Hardscape tool creates patterned walkways and areas, including the border and joint scoring. A flexible Massing Model tool and suite of architectural objects create building models. Publish drawing sets as multipage PDFs, DWFs, or DXF/DWGs at full or reduced sizes. Or, publish, share, and collaborate with other key stakeholders in the office or on the job site with Vectorworks Cloud Services and our mobile application, Vectorworks Nomad.

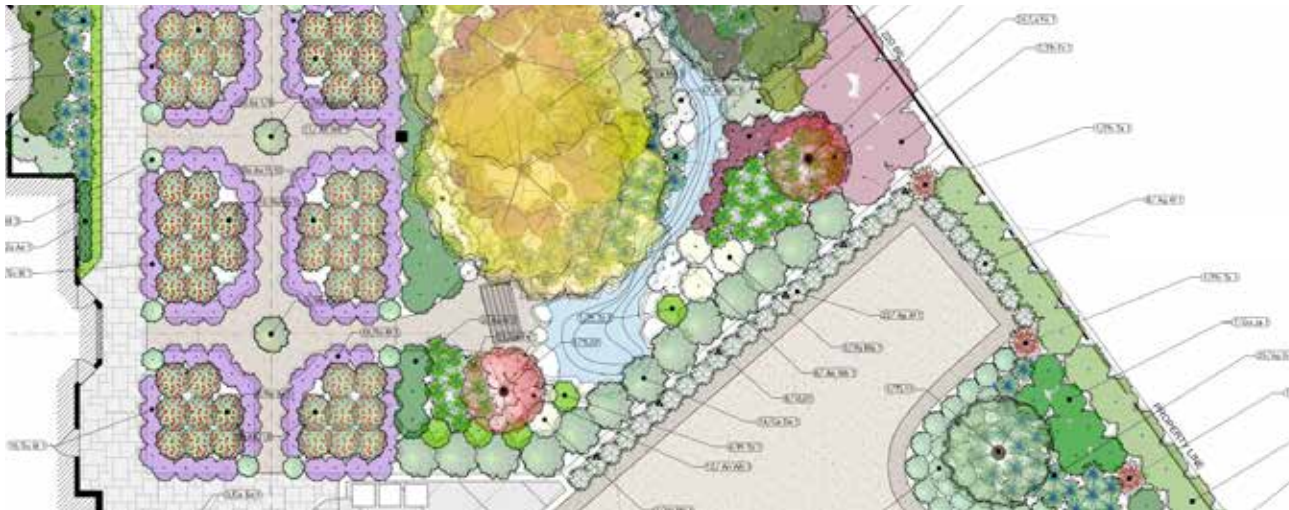


Image courtesy of Choate Associates

YOUR VISIONS. PERFECTLY REALIZED.

From vision to reality, we know the best designs are the ones that clearly communicate your inspiration.

Vectorworks Landmark is inspired by you. Everything from the interface, to the tools and commands, to the superior graphic and presentation capabilities, and the workflows it supports is developed based on input from design professionals like you. Here are some of the ways Vectorworks Landmark helps you see your visions perfectly realized.

Easy-to-Use Interface and Drafting Tools

Do what you like to do best — design. You won't waste time getting up to speed because Vectorworks Landmark software's simple, customizable interface and what-you-see-is-what-you-get display make it easier to learn and use than standard CAD applications. No matter what you're switching from, the Vectorworks Landmark interface will seem familiar. Vectorworks software's SmartCursor technology replaces manual drafting tools, so even inexperienced CAD users can make the switch easily.

Powerful Presentations

Define and communicate your signature look with our advanced, high-end technology that's famous for helping users achieve beautiful, graphically rich presentations. Tap into our large libraries of entourage and unlimited palettes of colors. Easily import digital images and graphics. Multiple page layout options make it simple to arrange presentation boards.

Tailored for Your Success

Work in tandem with the application. Vectorworks Landmark is designed to work the way you think. In addition to designing with lines, arcs, and circles, you can design with walls, plants, hardscapes, landscape areas, landscape walls, grading, irrigation lines, roadways, property lines, massing models, and more. The site objects are easy to edit and display in both 2D and 3D views. And, with the power of Python™ scripting, plus our own scripting language VectorScript™, you can program everything from simple scripts that automate routine tasks to full-blown commercial applications.

Your signature style can be incorporated into your designs with the software. Add gradients, tile and image fills, stipples, and hatching. Use our distinctive sketch rendering and exclusive plant styling technologies to blur the line between construction and presentation.

Renderworks

We've partnered with the award-winning CINEMA 4D render engine to provide rendering capabilities that are faster and easier than standalone rendering applications. When added to Vectorworks Landmark software, Renderworks® is fully integrated into the software interface, so it lets you seamlessly visualize your work throughout the design process and produce clear and accurate renderings. With the click of a button, rendered viewports will update as your design evolves.



ABOUT NEMETSCHKE VECTORWORKS, INC.

A Tradition of Excellence

The company was founded in 1985, and the Vectorworks product line now serves over a half a million professional designers worldwide. We listen to our customers and use their feedback to create products that continually exceed their expectations, delivering superior design flexibility and world-class graphics.

Vectorworks is a cross-platform line of professional CAD software and the preferred application for world-renowned and award-winning professionals like Peter Walker, Adrian McGregor, The Office of James Burnett, and Schweingruber Zulauf Landschaftsarchitekten who move the design world forward every day.

Vectorworks Landmark software is produced by Nemetschek Vectorworks, Inc., a wholly owned subsidiary of the Nemetschek Group, a leading global software provider for the architecture, engineering, and construction market (AEC). Vectorworks software is translated into 10 languages and is used by design professionals in 85 countries.



Nemetschek Vectorworks, Inc.
7150 Riverwood Drive, Columbia, MD 21046-1295 USA
www.vectorworks.net
T 410-290-5114 | F 410-290-8050

©2014 Nemetschek Vectorworks, Inc. All rights reserved.
Vectorworks, Renderworks, and MiniCAD are registered trademarks of Nemetschek Vectorworks, Inc.
SmartCursor and VectorScript are trademarks of Nemetschek Vectorworks, Inc.; X-ray Select (patent pending)

System Recommendations

Mac OS X 10.7.5 or later operating system
Intel Core 2GHz or better processor

Windows XP SP3 | Vista SP2 | Windows 7 SP1 | Windows 8 operating system
Pentium 2GHz or better processor

RAM*

2GB minimum, 4GB highly recommended
8GB – 16GB recommended for large files and complex renderings.

Graphics

1280x800 or greater recommended
512MB VRAM minimum, 1GB+ VRAM recommended for high-quality rendering
Support for OpenGL v2.1 or greater for the best video card performance

* Like past releases, Vectorworks 2015 added improvements which placed still higher demands on graphic hardware. The performance and quality of the graphics provided by the new Vectorworks Graphics Module depend directly on the speed, memory, and supported extensions of the graphics card. These new features have the potential to provide a very fast and fluid experience if used on capable hardware, or a noticeably slower experience if used on older or incompatible hardware. In general, the more powerful your video card is, the better your Vectorworks experience will be.

For the most current and update technical information, please visit our Knowledgebase at <http://kbase.vectorworks.net>.

See www.vectorworks.net/sysreq/ for updated information.

Vectorworks® Landmark

YOUR
VISIONS.
PERFECTLY
REALIZED.